

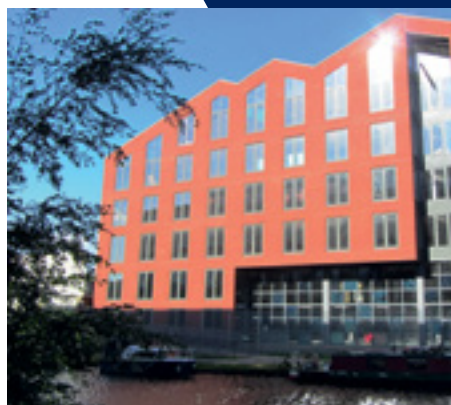
Uniclass	EPIC
L413:P43	D13:X421
CI/SfB	
(31.4)	Xh4



**comar**  
ARCHITECTURAL ALUMINIUM SYSTEMS

# comar5P.i ADVANCED

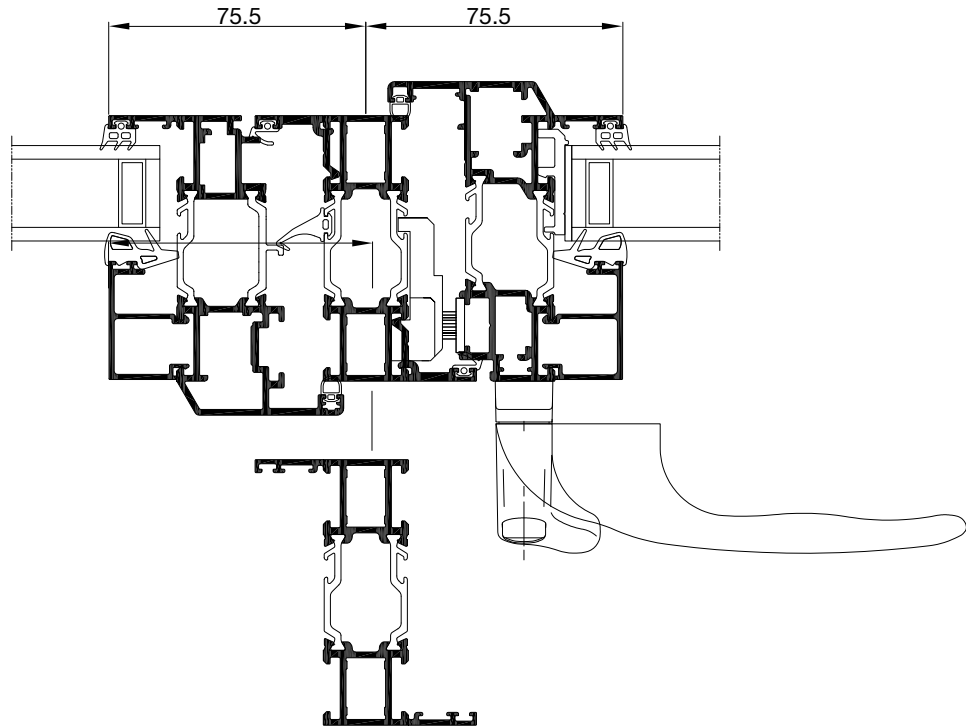
Using the latest thermal break technology to produce windows for the next generation of solutions.



complementing architecture

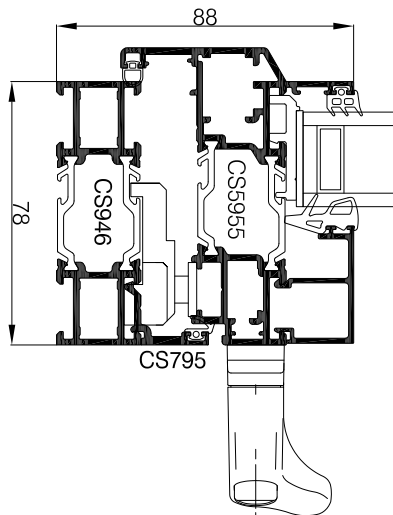
# on-time

## Comar 5P.i Advanced Casement next to Comar 5P.i Advanced Tilt/Turn



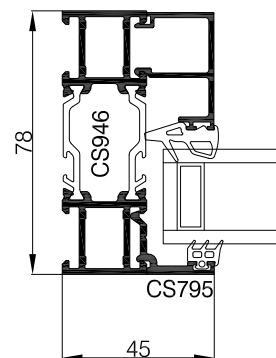
General arrangement showing Comar 5P.i Advanced casement next to Comar 5P.i Advanced Tilt/Turn using loose bead option. Also showing "Z" Section Option.

## Comar 5P.i Advanced Casement Internally Beaded window



General arrangement showing Comar 5P.i Advanced casement internally beaded window using loose bead option.

## Comar 5P.i Advanced Internally Beaded fixed light



General arrangement showing Comar 5P.i Advanced internally beaded fixed light using loose bead option.

# comar

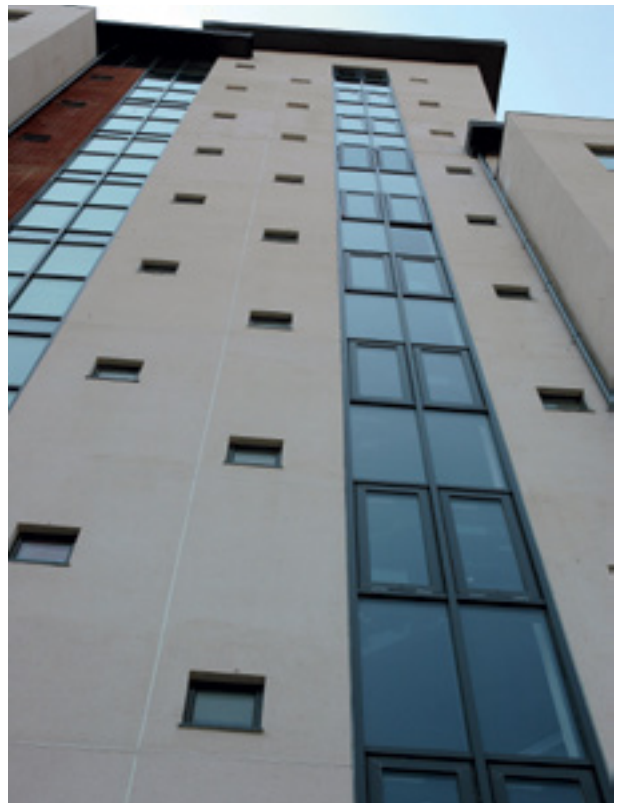
## Comar 5P.i Advanced Window System

The brief to Comar's Design Team was to specifically meet architectural demands; low U-values, matching slim sight lines for both the casement and tilt/turn, large glazing pocket for acoustic glass, secured by design and large sizes. For our contractor and fabricator partners; performance with built in fast-track fabrication and installation.

Therefore integration is the key factor which underpins our latest product launch. Our market leading Comar 9P.i Framing system offers fast-track semi unitised construction for floor to ceiling glazing, allowing Tilt/Turn or Casement windows to hang direct from the Comar 9P.i Frame as well as rebated doors. With the addition of thermal foam and triple glazing Comar 9P.i offers U-values down to 0.77, creating a future proof solution for our architectural, contractor and fabricator partners.

Comar have incorporated the technology from our Comar 9P.i system into the Comar 5P.i window range, and are now launching the Comar 5P.i Advanced Casement and Tilt/Turn window system, creating the option for stand-alone high performance windows.

The new high performance windows also integrate into Comar 9P.i Framing, with new profile solutions which allow open-in and open-out doors or windows in the same screen.



# perform

## Key Features

- Comar 5P.i Advanced Casement has new vent and outer frame profiles, so no reverse adaptors are required, reducing costs for both stand alone casements and integration into Comar 9P.i framing
- Slimmer sight lines on Comar 5P.i Advanced Casement means U-values as low as 0.94
- Comar 5P.i Advanced Casement matches the slim sight lines of the Tilt/Turn
- Comar 5P.i Advanced Casement offers both internal and externally beaded options
- Uses existing locking options – shoot-bolt and cockspur
- BS 6375, Comar 5P.i Advanced has been tested with the new vent profiles and achieves 600Pa on both Air and Water
- PAS 24:2012, Comar 5P.i Advanced has been tested and passed at BSI offering Secured by Design options
- For even lower U-values thermal foam is available from stock for all profiles
- All profiles/accessories are tried and tested and available from stock

## Combinations

- New “Z” section profiles allow the glazing of open-in and open-out configurations next to each other, for instance, open-out top lights above and open-in Tilt/Turn or Door with no need for reverse adaptors



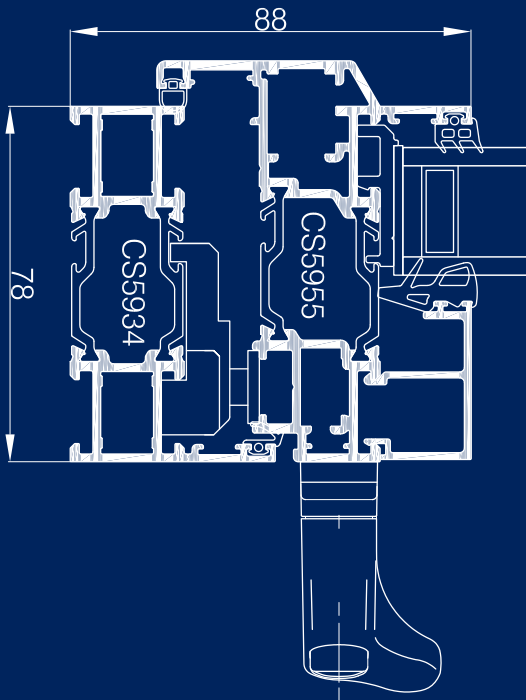
## Technical Capabilities

- Glazing 17mm-62mm
- PAS 24:2012
- BS 6375 Air 600Pa, Water 600Pa
- Integrates with Comar 9P.i Ladder & Mitre Framing
- Integrates with Comar 7P.i FSD & Comar 7P.i CD
- U-values as low as 0.94

Comar 5P.i Advanced	Maximum Width	Maximum Height	Weight
Tilt & Turn	1700mm	2400mm	115kg
Bottom Hung Open-in	1740mm	2400mm	115kg
Side Hung Open-in	1700mm	2400mm	115kg
Top Projected	-	2500mm	115kg
Side Projected	1000mm	-	40kg

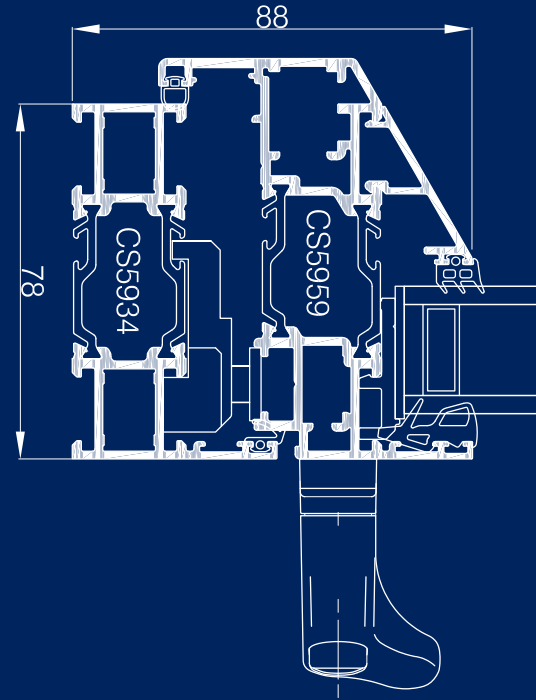
# perform

## Comar 5P.i Advanced Casement Internally Beaded



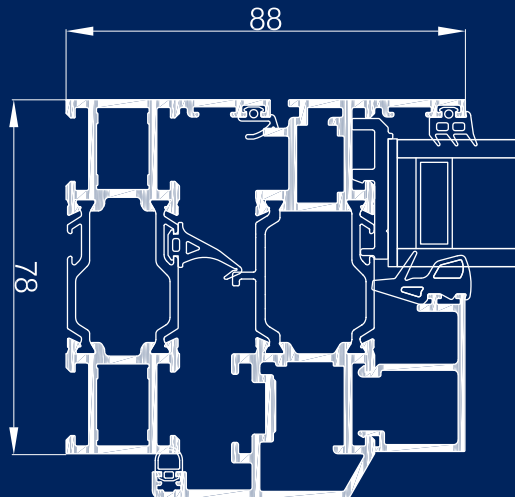
General arrangement showing Comar 5P.i Advanced Casement Window Internally beaded.

## Comar 5P.i Advanced Casement Externally Beaded



General arrangement showing Comar 5P.i Advanced Casement Window Externally beaded.

## Comar 5P.i Advanced Tilt/Turn window



General arrangement showing Comar 5P.i Advanced Tilt/Turn window.



### **Technical Back-Up**

An experienced Sales Team covers the UK while the Technical Department offers an unsurpassed design and installation advice service to designers, specifiers and fabricators; Simply call: 0208 685 9685

### **For More Information**

To find out more about this or any other Comar Architectural Aluminium System, or to obtain your personal copies of the Comar Technical Manuals call: +44(0) 20 8685 9685 or fax on: +44(0) 20 8646 5096

### **The Parkside Group Ltd**

The Willow Centre  
17 Willow Lane, Mitcham  
Surrey CR4 4NX

Tel: 0208 685 9685

Fax: 0208 646 5096

Email: [projects@parksidegroup.co.uk](mailto:projects@parksidegroup.co.uk)

Web: [www.comar-alu.co.uk](http://www.comar-alu.co.uk)